



WATER TEMPERATURE CONTROLLER TYPE 95EC 40 - 60



Technical Features

Type	95 EC 40	95 EC 60
Medium	Water	Water
Maximum Temperature °C	90	90
Heating Capacity kW	40	60
Nb Heating Stages	1	1
Cooling Technology	Exchanger	
Cooling Power * kW	70	70
Pump Type	CHI 12/30	
Maximum Throughput l/min	200	200
Maximum Pressure bar	6	6
Leak-Stop Function	No	No
Filling	Automatic	
Filling Volume litre	8	10
Expansion Volume litre	6	6
Control and Regulation	MicroP - Self-Tuning	
Voltage	400V - 3Ph+earth - 50Hz	
Weight (empty) kg	165	180

* Water 10°C - Maximum Process Temperature

Options

Remote Temperature Sensor /
Remote Alarm

Code

SA

Communication Euromap 17
Remote Control

E17

CF

Optional Equipment

2 Inlets/ 2 Outlets

2DR

3 Inlets/ 3 Outlets

3DR

4 Inlets/ 4 Outlets

4DR

6 Inlets/ 6 Outlets

6DR

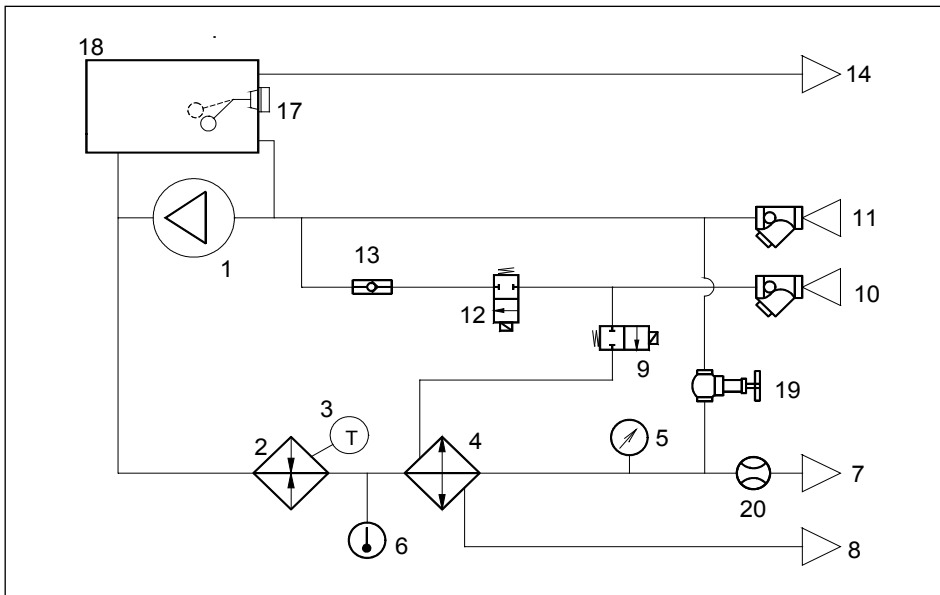


Hot Runner Controls
Mould Temperature Control
Sequential Moulding
Production Monitoring

Parc Industriel Sud - Groissiat
F - 01100 OYONNAX
Tel (33) 04.74.77.34.53
Fax (33) 04.74.73.90.18
e-mail sise@sise.fr
web: www.sise.fr

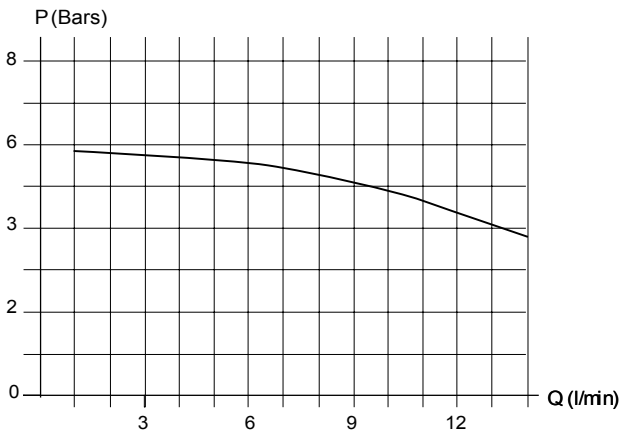
MOULD TEMPERATURE CONTROL

Hydraulic circuit

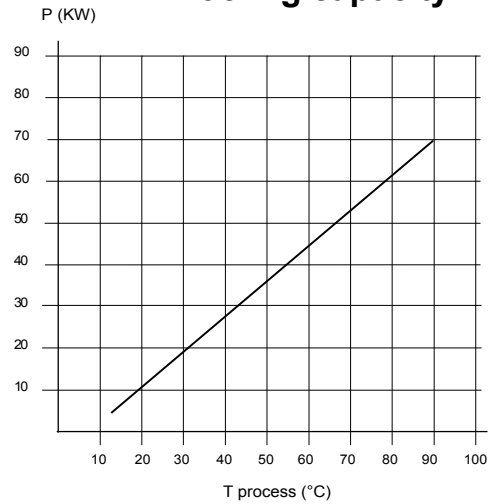


- 1 - PUMP
- 2 - HEATING ELEMENT
- 3 - SAFETY THERMOSTAT
- 4 - EXCHANGER
- 5 - PRESSURE MASURE
- 6 - TEMPERATURE SENSOR
- 7 - TOOL OUTLET
- 8 - OUTLET - COOLING WATER
- 9 - SOLENOID VALVE - COOLING WATER
- 10 - GENERAL WATER SUPPLY
- 11 - TOOL RETURN
- 12 - SOLENOID VALVE - FILLING
- 13 - CHECK VALVE
- 14 - OVERFLOW
- 17 - LEVEL SENSOR
- 18 - EXPANSION TANK
- 19 - BY-PASS
- 20 - FLOWMETER

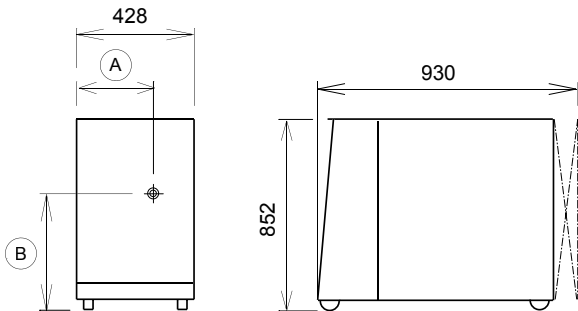
Pump performance



Cooling capacity



Dimensions



ITEM	A	B	DN-Inch	NATURE
TOOL OUTLET	180	575	40 - 1"1/2	THREADED END
TOOL RETURN	300	250	40 - 1"1/2	THREADED SLEEVE
GENERAL WATER SUPPLY	325	580	15 - 1/2"	THREADED SLEEVE
OUTLET COOLING WATER	90	720	15 - 1/2"	THREADED END
EMPTYING	155	145	8 - 1/4"	THREADED SLEEVE
OVERFLOW	315	805	Ø 21,3	RACCORD PLYMOUTH SORTIE 25MM

S.I.S.E.

Hot Runner Controls
Mould Temperature Control
 Sequential Moulding
 Production Monitoring

Parc Industriel Sud - Groissiat
 F - 01100 OYONNAX
 Tel (33) 04.74.77.34.53
 Fax (33) 04.74.73.90.18
 e-mail sise@sise.fr
 web: www.sise.fr