

CONTROL SYSTEM FOR SEQUENTIAL MOULDING

S.I.S.E.

WIN'IS 2000 Software

WIN'IS 2000 software runs under Windows® 9x / NT / 2000 / XP environments and connects to IS'2000 sequential control cabinets.



- Multilingual Interface as standard
- Programming of valve gate movements :
 - Up to 5 Openings / Closings per cycle
 - Free combination of triggering signals for any movement
 - Extended time as a delay from Injection Start or Hold Start
 - Screw position in % of injected material, in mm, or in cm³
 - Injection pressure
 - External events (digital or analog signals)
- Load / Save of mould settings without limitation
- Manual control of valve gate pin movement

The connection between the PC and the cabinet is made via a cable from the COM port on the PC to the RS232 port on the cabinet.

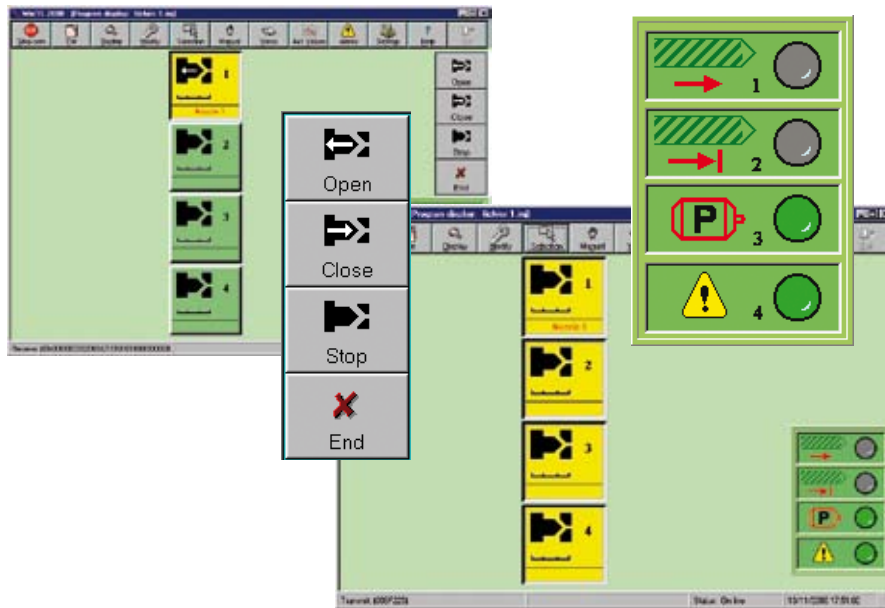
S.I.S.E.

Hot Runner Controls
Mould Temperature Control
Sequential Moulding
Production Monitoring

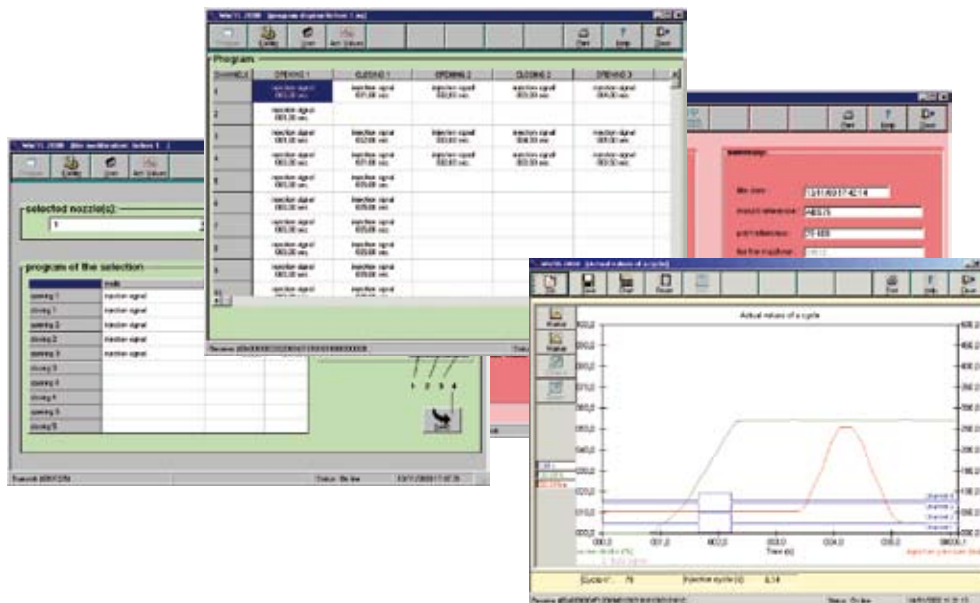
Parc Industriel Sud - Groissiat
F - 01100 OYONNAX
Tel (33) 04.74.77.34.53
Fax (33) 04.74.73.90.18
e-mail sise@sise.fr
web: www.sise.fr

CONTROL SYSTEM FOR SEQUENTIAL MOULDING

Display of pin position (open or closed) in the valve gate.



Numerous screens are available for the configuration of the system, the display or the modification of program files (programmed sequence of openings / closings, triggering signals, etc ...), the saving of various analogue data charts (curve of screw position, injection pressure, etc ...).



The Win'IS 2000 software also includes extra features:

- "Off-line" programming (PC is disconnected from cabinet)
- Transfer of data from one IS'2000 control system to another.