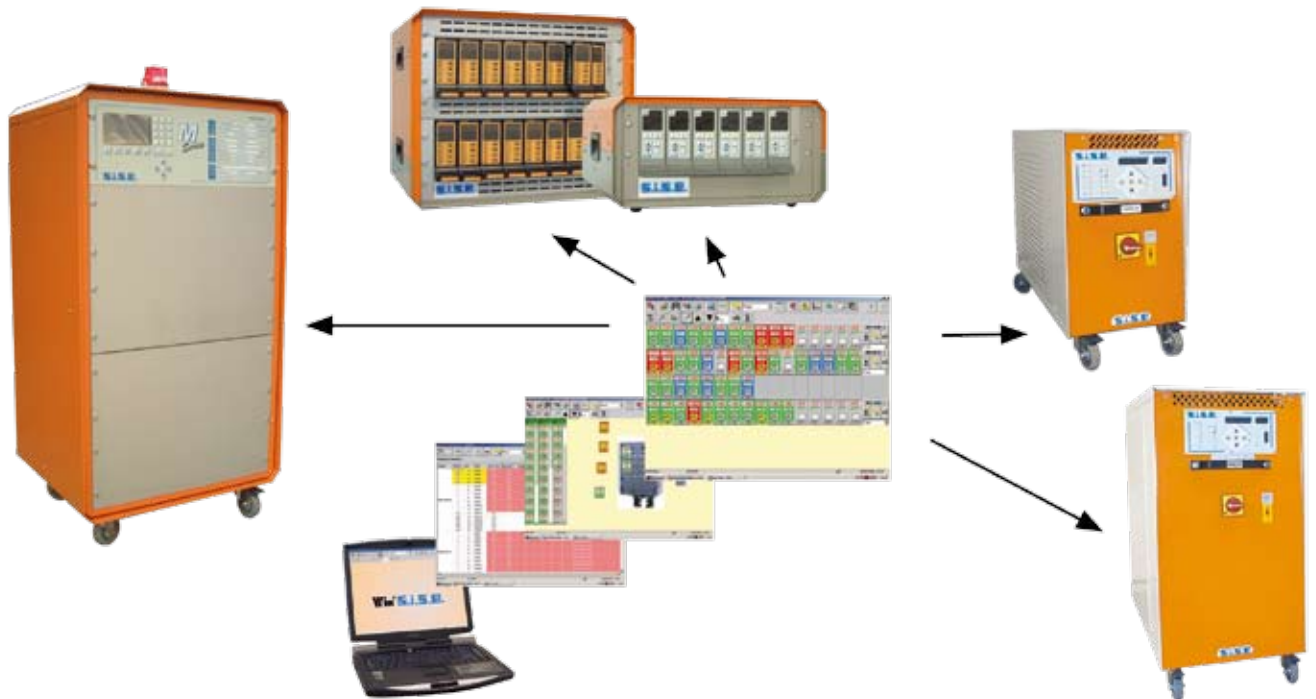


# S.I.S.E.

## WIN'SISE Software

WIN'SISE is an application running under Windows® 9x / NT / 2000 / XP developed for communication between the SISE Ranges of Hot Runner Controllers and Mould Temperature Controllers.



- Multilingual interface
- Control parameters modification:
  - Setpoint modification (1C / 2C)
  - BOOST activation
  - Alarms adjustments
  - Zones grouping
  - Zones labelling
- Mold / Hot Runner pictures with zones indications
- Temperature / defaults recording

# S.I.S.E.

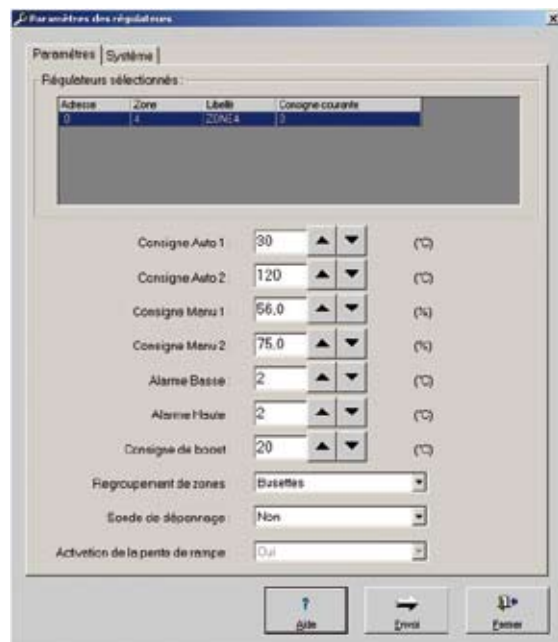
**Hot Runner Controls**  
Mould Temperature Control  
Sequential Moulding  
Production Monitoring

Parc Industriel Sud - Groissiat  
F - 01100 OYONNAX  
Tel (33) 04.74.77.34.53  
Fax (33) 04.74.73.90.18  
e-mail [sise@sise.fr](mailto:sise@sise.fr)  
web: [www.sise.fr](http://www.sise.fr)

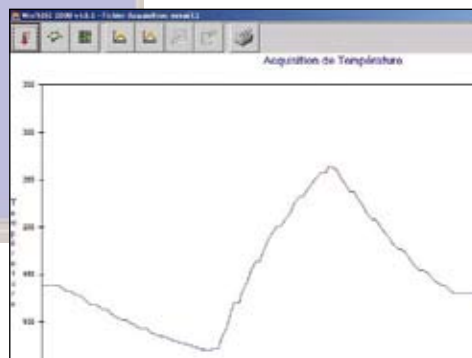
# TEMPERATURE CONTROLLER FOR HOT RUNNER MOULDING SYSTEMS



Different screen shots of WIN'SISE software



Date	Heure	Temp. Zone 1	Temp. Zone 2	Temp. Zone 3	Temp. Zone 4	Temp. Zone 5	Temp. Zone 6	Temp. Zone 7	Temp. Zone 8
2008-08-08	08:00	120.0	120.0	120.0	120.0	120.0	120.0	120.0	120.0
2008-08-08	08:05	120.0	120.0	120.0	120.0	120.0	120.0	120.0	120.0
2008-08-08	08:10	120.0	120.0	120.0	120.0	120.0	120.0	120.0	120.0
2008-08-08	08:15	120.0	120.0	120.0	120.0	120.0	120.0	120.0	120.0
2008-08-08	08:20	120.0	120.0	120.0	120.0	120.0	120.0	120.0	120.0
2008-08-08	08:25	120.0	120.0	120.0	120.0	120.0	120.0	120.0	120.0
2008-08-08	08:30	120.0	120.0	120.0	120.0	120.0	120.0	120.0	120.0
2008-08-08	08:35	120.0	120.0	120.0	120.0	120.0	120.0	120.0	120.0
2008-08-08	08:40	120.0	120.0	120.0	120.0	120.0	120.0	120.0	120.0
2008-08-08	08:45	120.0	120.0	120.0	120.0	120.0	120.0	120.0	120.0
2008-08-08	08:50	120.0	120.0	120.0	120.0	120.0	120.0	120.0	120.0
2008-08-08	08:55	120.0	120.0	120.0	120.0	120.0	120.0	120.0	120.0
2008-08-08	09:00	120.0	120.0	120.0	120.0	120.0	120.0	120.0	120.0
2008-08-08	09:05	120.0	120.0	120.0	120.0	120.0	120.0	120.0	120.0
2008-08-08	09:10	120.0	120.0	120.0	120.0	120.0	120.0	120.0	120.0
2008-08-08	09:15	120.0	120.0	120.0	120.0	120.0	120.0	120.0	120.0
2008-08-08	09:20	120.0	120.0	120.0	120.0	120.0	120.0	120.0	120.0
2008-08-08	09:25	120.0	120.0	120.0	120.0	120.0	120.0	120.0	120.0
2008-08-08	09:30	120.0	120.0	120.0	120.0	120.0	120.0	120.0	120.0
2008-08-08	09:35	120.0	120.0	120.0	120.0	120.0	120.0	120.0	120.0
2008-08-08	09:40	120.0	120.0	120.0	120.0	120.0	120.0	120.0	120.0
2008-08-08	09:45	120.0	120.0	120.0	120.0	120.0	120.0	120.0	120.0
2008-08-08	09:50	120.0	120.0	120.0	120.0	120.0	120.0	120.0	120.0
2008-08-08	09:55	120.0	120.0	120.0	120.0	120.0	120.0	120.0	120.0
2008-08-08	10:00	120.0	120.0	120.0	120.0	120.0	120.0	120.0	120.0



- Link between the SISE device and a PC is done through RS 232 / RS 485 / USB depending on device type .